

405-0002 1-15D SUPER BLAST UNIT  
208/480, 3 PHASE, 60 HZ

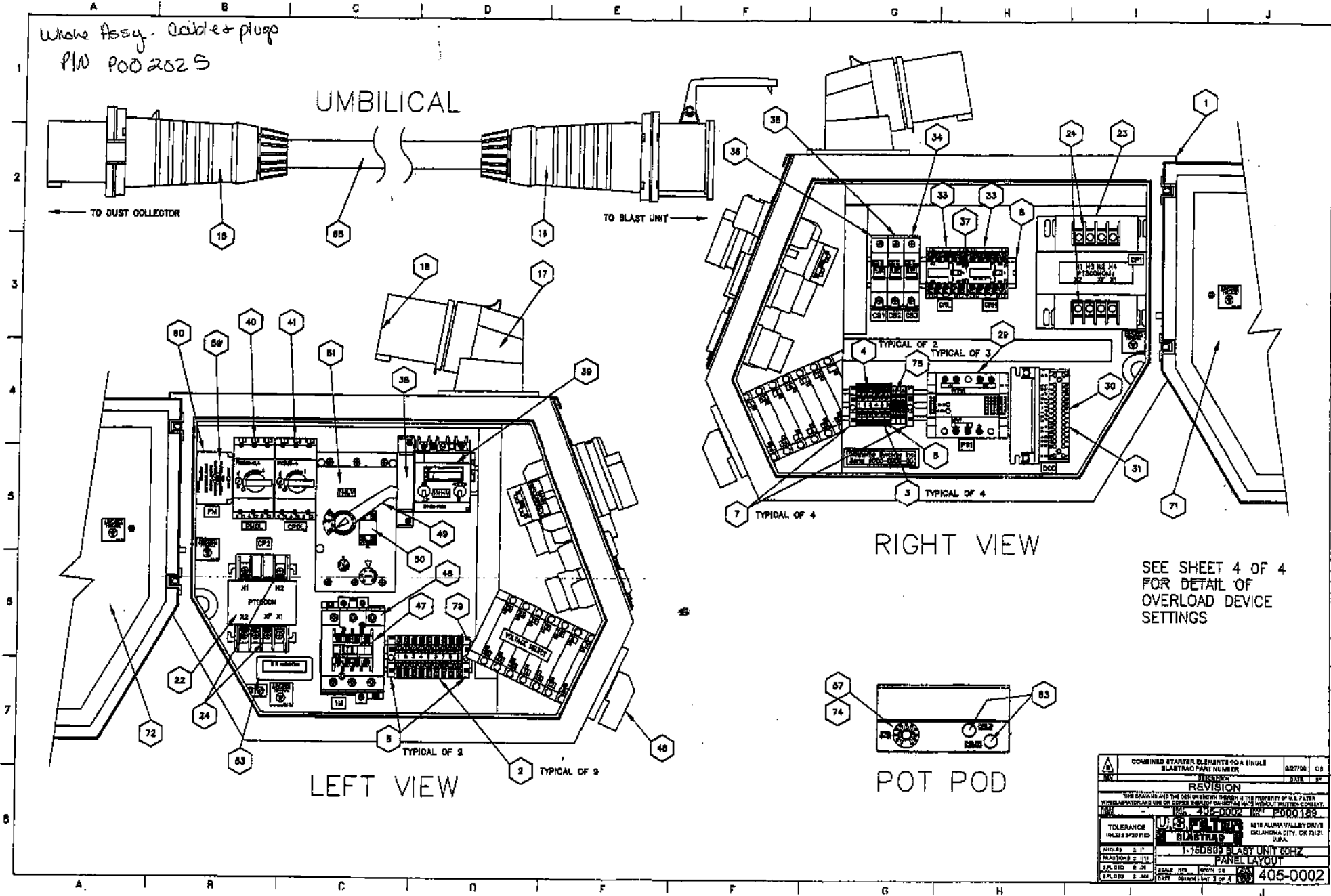
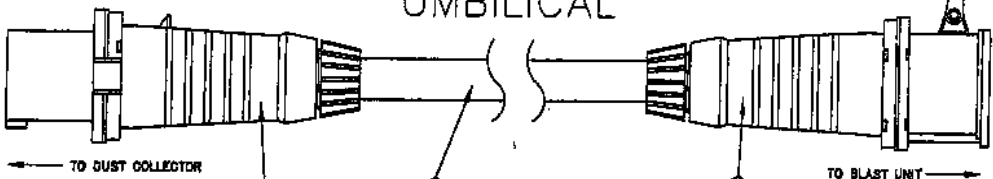
ITEM NO.	QTY	PN.	DESCRIPTION
1	1	P000346	ENCLOSURE
2	9	P000138	TERMINAL BLOCK, RK6-10, BLACK
3	4	717051	TERMINAL BLOCK, RED
4	2	717052	TERMINAL BLOCK, WHITE
5	2	717048	TERMINAL BLOCK, END BARRIER, KBL6-10 TERMINAL BLOCK
6	1	717049	TERMINAL BLOCK, ISOLATION PARTITION
7	4	717045	TERMINAL BLOCK, END ANCHOR, TERMINAL BLOCK, 35 MM
8	1	P000161	DIN RAIL, 35MM
9	1	P000190	VOLTMETER, DIGITAL, 600V, 48VDC PS, DUAL RELAY (VM)
10	1	P000715	AMMETER, DIGITAL, 5 AMP, 48VDC PS, 75 AMP PROGRAMMING (AM)
11	1	5730007	CABLE, QD CABLE 5 METER
12	1	5730008	SWITCH, PROXIMITY SENSOR
13	1	P000145	GASKET FOR HOUR METER (HM)
14	1	P000144	HOUR METER/ 120V, 50/60 HZ (HM)
15	1	716843	PLUG, CABLE END, 4 WIRE, 3 POLE, 600V, 60A
16	1	P000192	SOCKET, CABLE END, 4 WIRE, 3 POLE, 600V, 60 AMP
17	1	P000193	PLUG, PANEL MOUNT, 4 WIRE, 3 POLE, 600V, 60 AMP
18	1	P000194	PLUG, CAP FOR PANEL MOUNT PLUG
19	2	P000394	LAMP, T3 1/4, 28V (PL1 & PL2)
20	1	P000393	LAMP, T3 1/4, 120V (PL3)
21	1	P000150	PILOT LIGHT, GREEN, LESS LAMP (CONTROL POWER) (PL3)
22	1	P000195	XFMR, 480 V PRI x 240 V SEC, 100 VA (CP2)
23	1	P000196	XFMR, 240/480-120 SECONDARY (500VA) (CP1)
24	4	P000147	XFMR, TERMINAL COVER (2-CP1 & 2-CP2)
25	1	P000164	CONNECTOR HOOD W/ PINS, TOP ENTRY (DC DRIVE)
26	1	P000165	CONNECTOR, HOOD, CABLE TO CABLE (DC DRIVE)
27	1	P000166	CONNECTOR, MALE INSERT (DC DRIVE)
28	1	P000167	CONNECTOR, FEMALE INSERT (DC DRIVE)
29	1	P000342	POWER SUPPLY, 24 VDC, 30 W (PS)
30	1	P000160	HP RESISTOR
31	1	P000159	DC DRIVE WITH 5 K POT W/ INTERNAL REVERSING, 120V, 50/60 HZ (DCD)
32	1	P000168	LIMIT SWITCH (LS1)
33	2	P000201	RELAY/ FOR SENSING "VOLT SELECT", 4PNO (CRH, CRL)
34	1	P000202	CIRCUIT BREAKER/ POWER SUPPLY SECONDARY, 0.5 AMP (CB3)
35	1	P000203	CIRCUIT BREAKER/ 2:1 XFMR SECONDARY, 1.0 AMP (CB2)
36	1	716814	CIRCUIT BREAKER/ CPT SECONDARY, 6.0 AMP (CB1)
37	1	P000204	RELAY, MECHANICAL INTERLOCK (BETWEEN CRH & CRL)
38	1	P000171	AUX CONTACT , (1 NO/1 NC) FOR HIVO BLAST OL (1MHV)
39	1	P000343	MCP FOR BLAST, 16-27 AMP (1MHV)
40	1	P000207	MCP FOR PHASE MONITOR, 0.25-0.4 AMP (PMOL)
41	1	716824	CPT PRIMARY PROTECTION, 2.5-4 AMP (CPOL)
42	1	P000155	SWITCH, PUSH BUTTON, DUAL, FOR START/STOP (PB2A & PB2B)
43	1	P000210	PILOT LIGHT, GREEN, LESS LAMP (PROPER PHASE) (PL2)
44	1	P000211	PILOT LIGHT, RED, LESS LAMP (IMPROPER PHASE) (PL1)
45	1	P000212	E STOP SWITCH, LATCHING, PULL TO RELEASE, 2 NC (PB1 E-STOP)
46	1	P000214	SWITCH, VOLTAGE (VS)
47	1	P000215	AUX CONTACTS FOR BLAST CONTACTOR (2NO/2NC) (1M)
48	1	P000216	CONTACTOR FOR BLAST (1M)
49	1	P000217	MPS, HANDLE FOR MPS, BLAST (1MLV)
50	1	P000218	AUX CONTACT , (1 NO/1 NC) FOR BLAST LOVO MCP (1MLV)
51	1	P000219	MCP, 40-63 AMP, BLAST W/ AUX CONTACT (1MLV)
52	1	P000220	SWITCH/ MAIN DISCONNECT W/ HANDLE, 100 AMP (MAIN)
53	1	P000344	CURRENT TRANSFORMER, AC, 75:5 RATIO, W/ 24 " LEADS (CT)

405-0002 1-15D SUPER BLAST UNIT  
208/480, 3 PHASE, 60 HZ

54	1	P000440	DIGITAL DISPLAY, FOOT PER MINUTE (FPM)
55	2	691949	STRAIN RELIEF, DOUBLE EYELET, 1-1.25" (ONE END EACH POWER CORD)
56	2	P000180	CORD GRIP, 0.20"-0.35", 11PG, (DC MTR-2 EACH)
57	1	P000181	CORD GRIP, 0.20"-0.35", 13.5PG, (LS-1)
58	4	691925	CORD GRIP, 0.24"-0.47", .1/2" NPT, (PANEL/DC MTR AND LS)
59	1	P000221	RELAY/PHASE SEQUENCE/LOSS SELF POWERED, 200/480 V, 50/60 HZ (PM)
60	1	P000315	SOCKET, RELAY FOR PHASE SEQUENCE MONITOR (PM)
61	1	P000392	POTENTIOMETER KNOB, SCALED 1-10
62	1	P000322	CONNECTOR/ SEALTITE, 1 1/4" 90 DEG (BLAST MOTOR)
63	4	P000325	SEALTITE/ 1 1/4, FLEXIBLE, 44 INCHES USED
64	70	P000328	WIRE, #10 AWG, THHN, STRANDED (BLAST MTR/PANEL) 7'
65	55	P000333	WIRE, CABLE, 4 AWG, 4 CONDUCTOR, TYPE W
66	4	P000335	WIRE, 18/3, 300V, SHIELDED (4' TO DRIVE)
67	2	P000336	SWITCH, PUSH BUTTON (REVERSE & OVERDRIVE)
68	2	P000329	LINK, QUICK, 5/16, SPRING CLIP
69	1	716794	BUSHING/ REDUCING,
70	1	P000345	INSTRUCTION LEGEND PLATE
71	1	P000358	DOOR/ENCLOSURE R.H. SIDE 1-10D99 THRU 1-15DS99
72	1	P000359	DOOR/ENCLOSURE L.H. SIDE 1-10D99 THRU 1-15DS99
73	2	P000348	LIQUIDTITE CLAMP, 1 1/4"
74	2	P000349	CONNECTOR/MALE, 4 POLE, 300V
75	2	P000350	CONNECTOR/FEMALE, 4 POLE, 300V, W/STRAIN RELIEF
76	12	P000430	WIRE, 18/4, 300V, SHIELDED (2-6' TO HANDLE)
77	1	P000436	CONNECTOR/SEALTITE, 1 1/4" STRAIGHT (BLAST MTR)
78	3	P000437	TERMINAL BLOCK, SRK2.5, NEUTRAL
79	1	P000438	TERMINAL BLOCK, END BARRIER, SRK2.5
80	1	687122	POTENTIOMETER, 5K, 2 W., FOR DC DRIVE (INCLUDED W/ DRIVE)

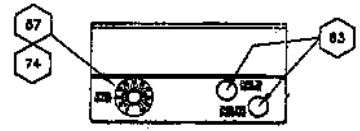
Whole Assy. - cables + plugs  
 P/W P002025

UMBILICAL

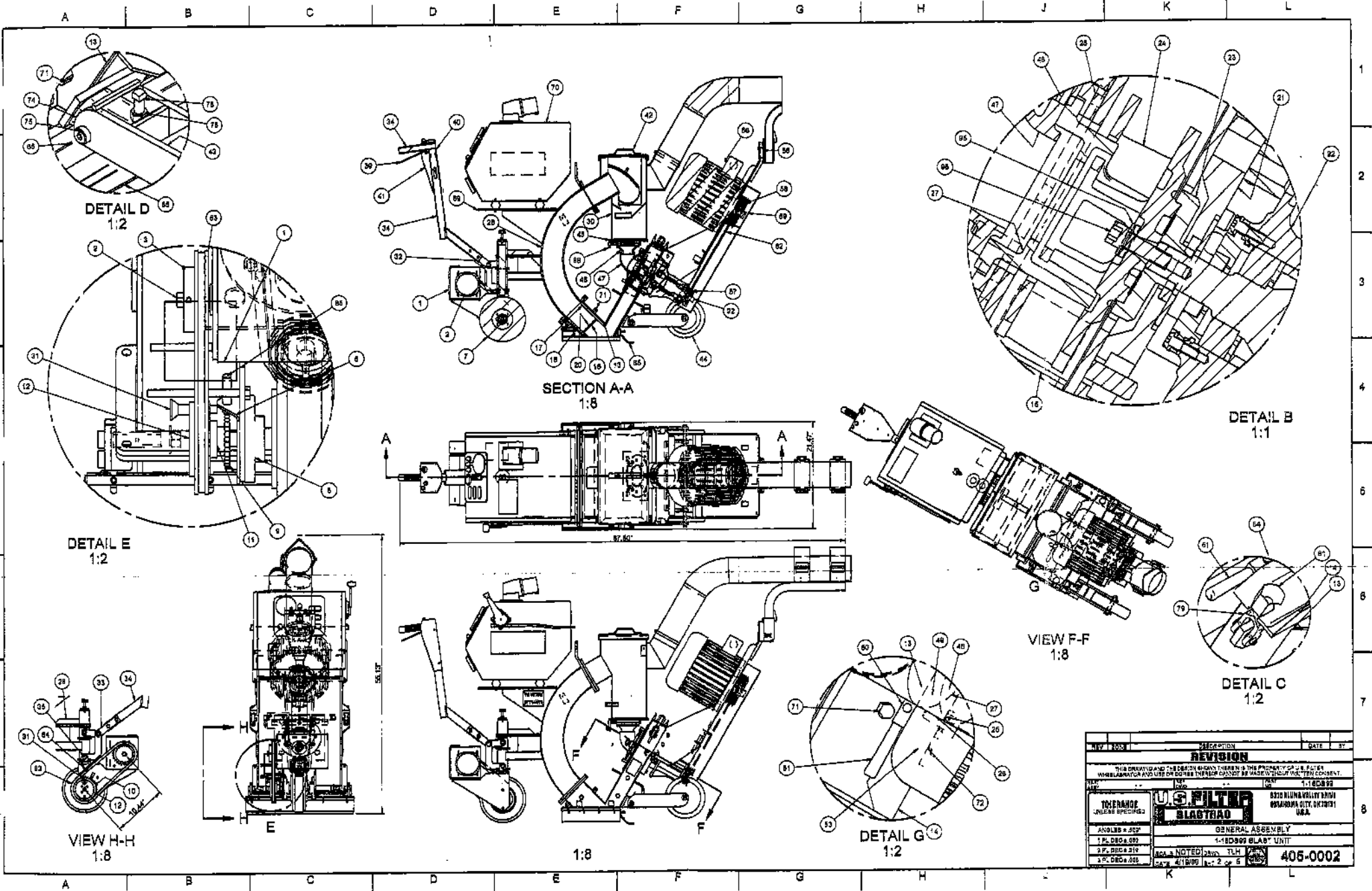


RIGHT VIEW

SEE SHEET 4 OF 4  
 FOR DETAIL OF  
 OVERLOAD DEVICE  
 SETTINGS



COMBINED STARTER ELEMENTS FOR SINGLE BLASTTRAD PART NUMBER		027700	08
REVISION		2/81	27
<small>THIS DRAWING AND THE DESIGN HEREON ARE THE PROPERTY OF U.S. PATENT AND MERCHANT AND USE OR COPIES THEREOF WITHOUT WRITTEN CONSENT ARE PROHIBITED.</small>			
TOLERANCE UNLESS SPECIFIED:			
1-750589 BLAST UNIT 807Z		1316 ALUMA VALLEY DRIVE OKLAHOMA CITY, OK 73121 U.S.A.	
PANEL LAYOUT			
SCALE: 1/8" = 1"	DATE: 01/01/81	405-0002	



REV	DATE	BY
<b>REVISION</b>		
THIS DRAWING AND THE DATA HEREON ARE THE PROPERTY OF U.S. FILTER CORPORATION AND USE BY OTHERS THEREON WITHOUT PERMISSION IS PROHIBITED.		
<b>U.S. FILTER CORPORATION</b> <b>BLASTRAID</b>		8310 ALBUQUERQUE DRIVE OKLAHOMA CITY, OKLAHOMA 73101 U.S.A.
GENERAL ASSEMBLY		
1-180899 BLAST UNIT		
1 PL. DEC 4 1952 2 PL. DEC 4 1952 3 PL. DEC 4 1952		405-0002 1-180899 1-2 of 5

# BLASTRAC 1-15DS/99 CONTROL PANEL FOR 208/230/480V - 60 HZ W/ HIGH/LOW VOLTAGE SETUP SWITCH AND VOLTAGE/PHASE ROTATION VERIFICATION

REV	DATE	BY	DESCRIPTION
1	11/15/99	...	...
2	...	...	...
3	...	...	...
4	...	...	...
5	...	...	...
6	...	...	...
7	...	...	...
8	...	...	...
9	...	...	...
10	...	...	...
11	...	...	...
12	...	...	...
13	...	...	...
14	...	...	...
15	...	...	...
16	...	...	...
17	...	...	...
18	...	...	...
19	...	...	...
20	...	...	...
21	...	...	...
22	...	...	...
23	...	...	...
24	...	...	...
25	...	...	...
26	...	...	...
27	...	...	...
28	...	...	...
29	...	...	...
30	...	...	...
31	...	...	...
32	...	...	...
33	...	...	...
34	...	...	...
35	...	...	...
36	...	...	...
37	...	...	...
38	...	...	...
39	...	...	...
40	...	...	...
41	...	...	...
42	...	...	...
43	...	...	...
44	...	...	...
45	...	...	...
46	...	...	...

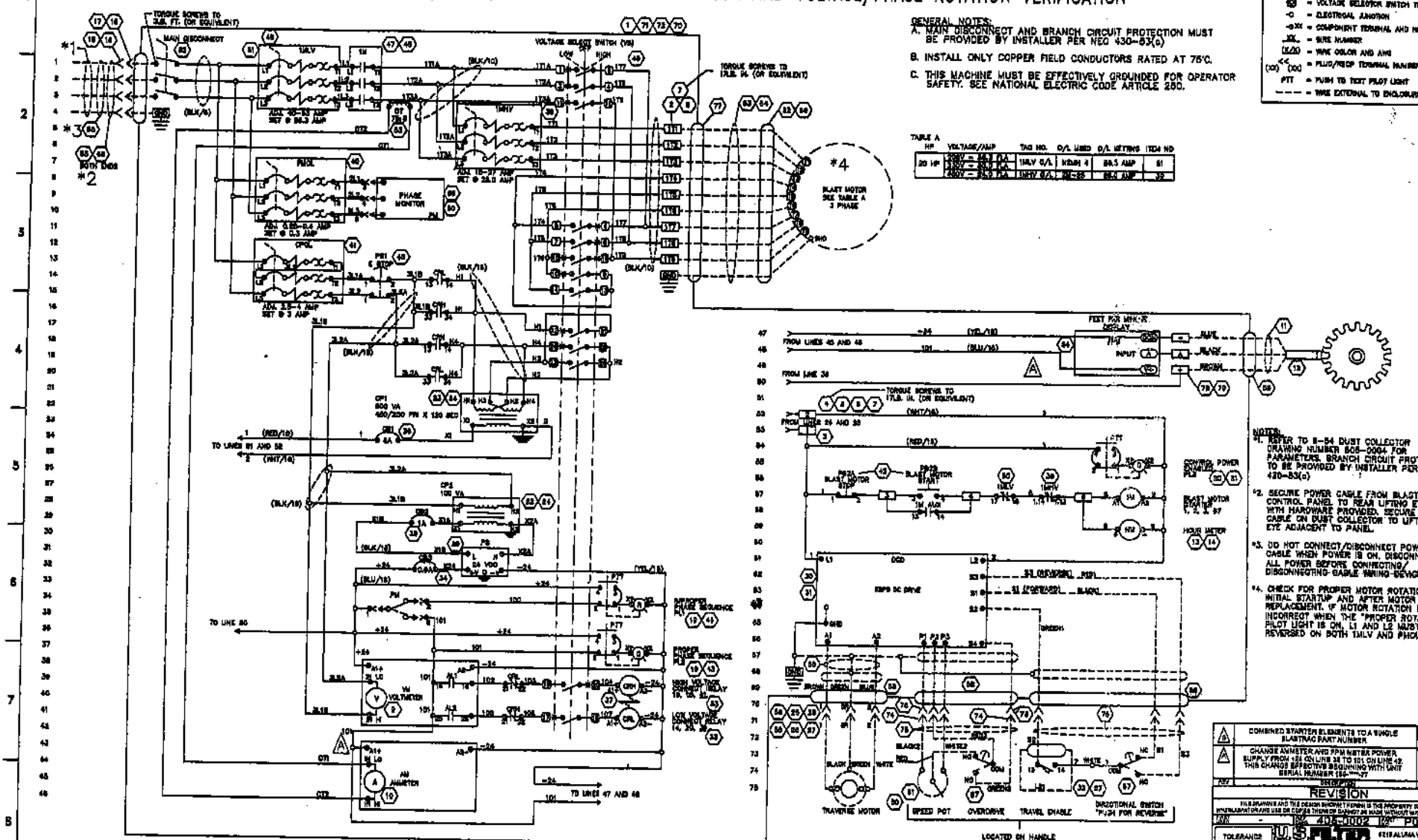
### SCHEMATIC SYMBOLS

- TERMINAL BLOCK
- VOLTAGE SELECTOR SWITCH TERMINAL
- ELECTRICAL ANNOTATION
- COMPONENT TERMINAL AND NUMBER
- WIRE NUMBER
- WIRE COLOR AND AWG
- PLUG/STRIP TERMINAL NUMBER
- PUSH TO TEST PILOT LIGHT
- WIRE EXTERNAL TO ENCLOSURE

- GENERAL NOTES:**
- A. MAIN DISCONNECT AND BRANCH CIRCUIT PROTECTION MUST BE PROVIDED BY INSTALLER PER REG 430-53(G)
  - B. INSTALL ONLY COPPER FIELD CONDUCTORS RATED AT 75°C.
  - C. THIS MACHINE MUST BE EFFECTIVELY GROUND FOR OPERATOR SAFETY. SEE NATIONAL ELECTRIC CODE ARTICLE 250.

TABLE A

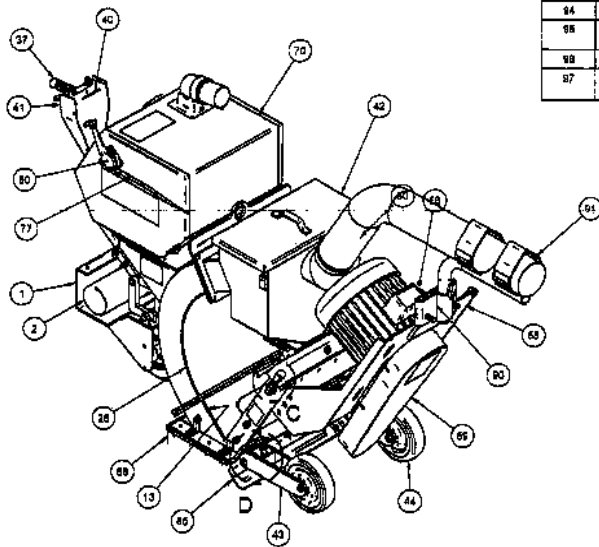
HP	VOLTAGE/AMP	TRK NO.	O/L USED	O/L METERS	ITEM NO
20 HP	208V - 230V 2A	10V 2A	1000	2A 5 AMP	51
20 HP	480V - 480V 2A	10V 2A	1000	2A 5 AMP	52



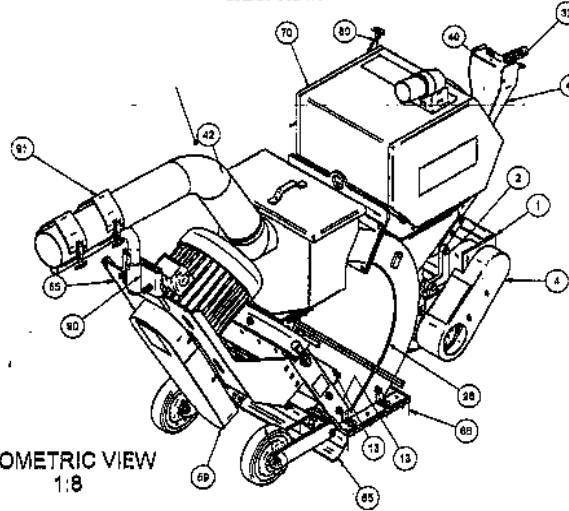
- NOTES:**
1. REFER TO E-54 DUST COLLECTOR DRAWING NUMBER 805-0004 FOR PARAMETERS. BRANCH CIRCUIT PROTECTION TO BE PROVIDED BY INSTALLER PER REG 420-83(G)
  2. SECURE POWER CABLE FROM BLAST UNIT CONTROL PANEL TO REAR LIFTING EYE WITH HARDWARE PROVIDED. SECURE POWER CABLE ON DUST COLLECTOR TO LIFTING EYE ADJACENT TO PANEL.
  3. DO NOT CONNECT/DISCONNECT POWER CABLE WHEN POWER IS ON. DISCONNECT ALL POWER BEFORE CONNECTING/DISCONNECTING CABLE WIRING DEVICES.
  4. CHECK FOR PROPER MOTOR ROTATION AT INITIAL STARTUP AND AFTER MOTOR REPLACEMENT. IF MOTOR ROTATION IS INCORRECT WHEN THE "PROPER ROTATION" INDICATOR WHEN THE "PROPER ROTATION" PILOT LIGHT IS ON, L1 AND L2 MUST BE REVERSED ON BOTH TMLV AND PHOL.

	COMBINED STARTER ELEMENTS TO A SINGLE BLASTRAC PART NUMBER CHANGE AMMETER AND RPM METER POWER SUPPLY FROM 120 VOLTS 20 TO 120 ON LINE 42. THIS CHANGE EFFECTIVE BEGINNING WITH UNIT SERIAL NUMBER 115-1000-77	8/27/00	DB
	REVISION	2/6/00	DB
FILE DRAWING AND THE DESIGN SHOWN THEREIN IS THE PROPERTY OF U.S. FILTER. INFORMATION FOR USE ON OTHER THAN U.S. FILTER OR U.S. FILTER EQUIPMENT IS FOR INFORMATION ONLY.			
U.S. FILTER 1-15DS/99 BLASTRAC 1-15DS/99 BLAST UNIT 208V SCHEMATIC			
TOLERANCE UNLESS SPECIFIED ANGLE 2° ± 1° DIMENSIONS ± .015 DIM. DEC. 0.0005 DIM. DEC. 0.001	SCALE 1/8" = 1" DIM. DEC. 0.0005 DATE 11/15/99	2218 ALABAMA VALLEY DRIVE CHICAGO, ILL. 60631 U.S.A.	405-0002

ITEM	QUANTITY	CATALOG NUMBER	DRAWING NUMBER	DESCRIPTION	ITEM	QUANTITY	CATALOG NUMBER	DRAWING NUMBER	DESCRIPTION	ITEM	QUANTITY	CATALOG NUMBER	DRAWING NUMBER	DESCRIPTION	ITEM	QUANTITY	CATALOG NUMBER	DRAWING NUMBER	DESCRIPTION
98	1	494036	83B0488	SIGN / CAUTION- BEARING UNIT DAMAGE	89	1	P000960	405-0004	BRACKET/MOUNTING - ELECTRICAL PANEL	35	2	491988	--	PIN/CLAVIS 3/8" x 1.75" LG.	1	1	490376	82D1287	YOKE/TRACTION DRIVE
99	2	464044	83A0419	SIGN / WARNING DO NOT OPERATE W/O GUARD	70	1	P000189	405-0308	PANEL/ELEC CONTROL 1-150.896 80 HZ	36	1	491988	--	PIN/CLAVIS x 6.02"	2	1	463516	81C0271	OSAR MTR / RT ANGLE BOSS/IN
100	1	4641610	83B0511	SIGN / WARNING OPERATE W/ SAFETY GLASSES	71	10	078291	9100508	NUT/HARDENED	37	1	463280	--	GRIP/HANDLE 1.00" I.D. RUBBER	3	1	084284	--	SPROCKET / 40-1A 28T
101	2	498276	86A0016	SIGN / CAUTION LIFT HERE	72	2	800589	--	SCREW/FLAT HEX 3/8" x 1/2" LG	38	1	490074	82B0996	LEVER/BIMATCH - TRACTION DRIVE	4	1	460077	62D1282	GUARD/TRACTION DRIVE
102	2	P000005	405-0017	DECAL - U.S. FILTER / BLASTRAC	73	2	601116	--	WASHER/LOCK 3/8"	39	1	490074	82B0996	LEVER/BIMATCH - TRACTION DRIVE	5	2	808571	--	BRG/FG 2 DODGE BALL BC
103	1	P000616	--	PLATE/SERIAL NUMBER - UBF/BLASTRAC	74	4	801106	--	WASHER/FLAT-1/2"	40	1	P000588	400-0010	BRACKET/MOUNTING - OPERATOR CONTROL	6	1	490072	82B0894	SHAFT/TRACTION DRIVE
104	1	869880	406-0018	STICKER / SAFETY - ELECTRIC SHOCK	75	8	800882	--	NUT/HEX 1/2" x 1/2" LG	41	1	P000589	400-0011	COVER/OPERATOR CONTROL MOUNTING BRACKET	7	1	490078	--	WHEEL/POLY 6"
105	1	452394	--	CLAMP/HOSE ADJUSTABLE S.S.	76	4	878279	--	BOLT / SHOULDER 5/8" x 2.75" LG.	8	1	P000630	400-0009	BRACKET/PROXIMITY SWITCH	8	1	P000697	400-0019	PICK-UP / SPEED SENSOR
106	1	462019	--	DUCT / FLEX - 5.00" DIA	77	1	P000727	405-0007	CABLE/ABRASIVE CONTROL VALVE	9	1	P000697	400-0019	PICK-UP / SPEED SENSOR	10	1	477831	80B0289	SPROCKET/TRACTION DRIVE
107	2	492012	--	WASHER / FLT 1.25" ID x 2.75" OD	78	2	800650	--	SCR/1/2"-15 BD. SET x 2 3/4" LG.	11	1	477830	80B0289	HUB/DRIVE SPROCKET	11	1	477830	80B0287	RETAINER/SPROCKET
108	1	468936	--	SEAL / FELT - W/A	79	2	226591	84A0940	JAW BOLT/ 1/2" WITH PIN AND COLLAR	12	1	477830	80B0287	RETAINER/SPROCKET	12	1	477830	80B0287	RETAINER/SPROCKET
109	1	468937	84 A 0168	RETAINER/FELT SEAL - W/A	80	1	P000735	--	OPERATOR/CABLE - SIDE MOUNT	13	1	678170	86D0341	BLAST HOUSING	13	1	678170	86D0341	BLAST HOUSING
110	1	872246	--	SCREW/ADJ.	81	2	198487	80A0987	NUT/HARDENED GAP 1/2" x 1/2" LG	14	1	469088	405-0014	COVER/BLAST HOUSING	14	1	469088	405-0014	COVER/BLAST HOUSING
111	2	X000266	--	RUBBER / SPONGE 28" THK X 1.00"	82	1	699706	--	V-BELT / NARROW 3VX850	15	1	469947	82B5117	LINER/2	15	1	469947	82B5117	LINER/2
112	2				83	1	254581	--	CHAD/ROLLER ABA #40 - 0.80" PITCH	16	1	469947	82B5117	LINER/2	16	1	469947	82B5117	LINER/2
					84	1	452688	--	LINK/CONNECTING MASTER ABA #40 0.80" P	17	1	469947	82B5117	LINER/2	17	1	469947	82B5117	LINER/2
					85	1	0873008	--	PROXIMITY SENSOR	18	1	469947	82B5117	LINER/2	18	1	469947	82B5117	LINER/2
					86	1	800982	--	SCR/1/2"-15 BD. SET x 3 1/2" LG.	19	1	499091	85 B 0143	LINER #1	19	1	499091	85 B 0143	LINER #1
					87	1	891280	--	SUPPORT / ANGLE-MOTOR	20	2	460046	82B0877	LINER/W	20	2	460046	82B0877	LINER/W
					88	1	P000019	400-0004	LINKAGE / VALVE	21	1	469947	82B0877	LINER/W	21	1	469947	82B0877	LINER/W
					89	1	491728	83A0089	PIVOT/CABLE LINKAGE CONNECTOR	22	1	469947	82B0877	LINER/W	22	1	469947	82B0877	LINER/W
					90	1	P000661	400-0012	BRACKET / MOUNTING SW/VAL	23	1	469947	82B0877	LINER/W	23	1	469947	82B0877	LINER/W
					91	1	P000682	400-0013	SUPPORT/CABLE	24	1	469947	82B0877	LINER/W	24	1	469947	82B0877	LINER/W
					92	1	878821	89C0285	LINER / SEP 1-160 BLL	25	1	469947	82B0877	LINER/W	25	1	469947	82B0877	LINER/W
					93	1	878277	86C0207	SCREEN / GALV #4 MESH (1.00" WIRE)	26	1	469947	82B0877	LINER/W	26	1	469947	82B0877	LINER/W
					94	1	677886	86C0522	GABINET / FLANGE	27	1	469947	82B0877	LINER/W	27	1	469947	82B0877	LINER/W
					95	1	469947	--	WASHER / SPHERICAL 3/8" HRDN STL	28	1	876036	80D0213	PISTON / REBOUND BLL	28	1	876036	80D0213	PISTON / REBOUND BLL
					96	1	800488	--	SCR / 3/8"-16 x 1.25 SHCS	29	1	461920	85A0126	YOKE	29	1	461920	85A0126	YOKE
					97	2	472653	76A1016	DECAL/SAFETY - VERIFY ROTATION	30	1	876037	80D0367	SEPARATOR / ASSEMBLY	30	1	876037	80D0367	SEPARATOR / ASSEMBLY
										31	1	478188	--	PIN/QUICK RELEASE - RECEIVED 3/8" DIA.	31	1	478188	--	PIN/QUICK RELEASE - RECEIVED 3/8" DIA.
										32	1	461948	83B0161	LINKAGE	32	1	461948	83B0161	LINKAGE
										33	2	461949	83B182	LINK/ARM	33	2	461949	83B182	LINK/ARM
										34	1	460076	82C0792	HANDLE/ASBY	34	1	460076	82C0792	HANDLE/ASBY

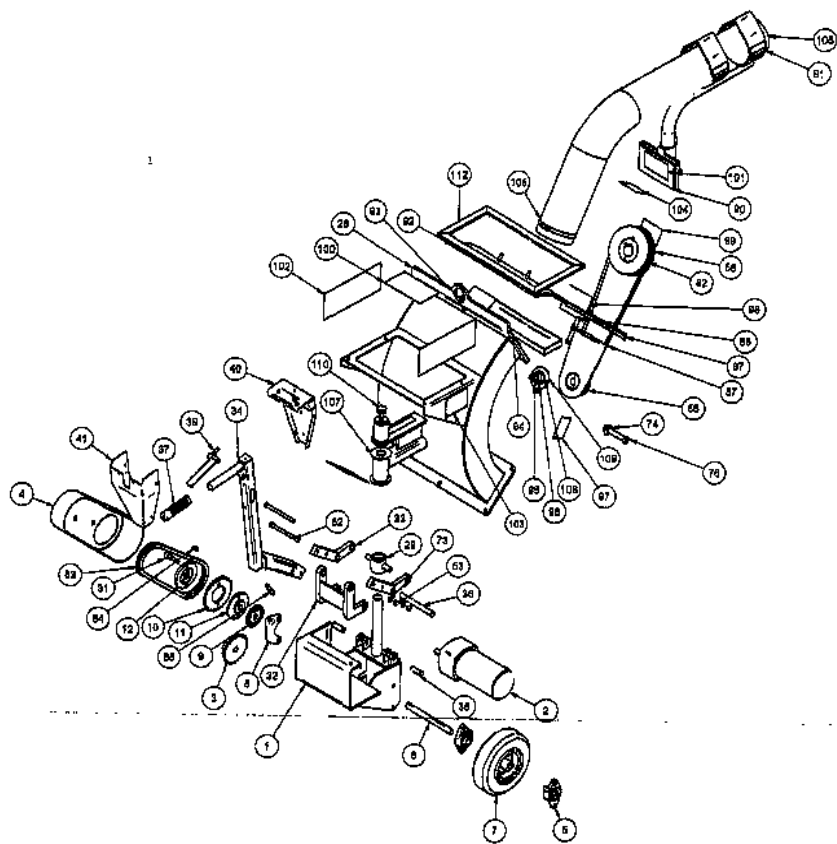


ISOMETRIC VIEW  
1:8



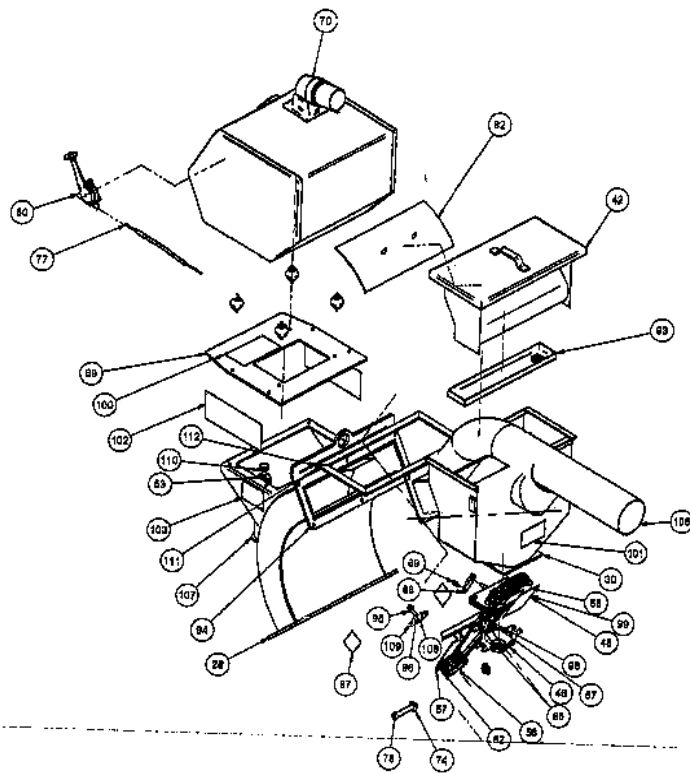
ISOMETRIC VIEW  
1:8

A	CONNECTED ITEM #77: WAS P000735	7/2/89	JLP
REV	001	08/11/89	BY
<b>REVISION</b>			
THIS DRAWING AND THE ITEMS IT SHOWS ARE THE PROPERTY OF U.S. FILTER. UNLESS ABRASION AND USE OR OTHER THEREOF CAUSING BE MADE BY YOU OR YOUR COMPANY.			
U.S. FILTER		1-150.896	
BLASTRAC		GENERAL ASSEMBLY	
ANGLE: 60°		1-150.896 BLAST UNIT	
1 P. DEC & 081		DATE: 4/10/89	
2 P. DEC & 010		REV: 1: 8	
3 P. DEC & 003		405-0002	

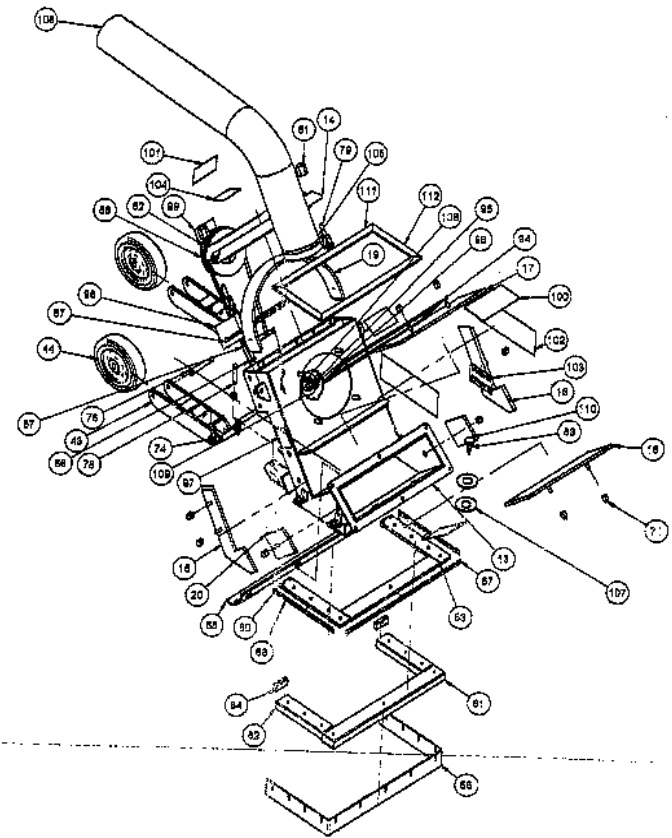


TRACTION DRIVE COMPONENTS  
1:8

REV	DATE	DESCRIPTION	BY	CHK
<b>REVISION</b>				
THIS DRAWING AND THE DESIGN HEREON ARE THE PROPERTY OF U.S. FILTER				
WHICH ARE NOT TO BE REPRODUCED OR TRANSMITTED IN ANY FORM OR BY ANY MEANS WITHOUT THE WRITTEN CONSENT				
DATE	1958	REV. NO.	1-1958	
<b>TOLERANCE</b> UNLESS SPECIFIED		<b>U.S. FILTER</b> <b>BLASTRAD</b>		
ANGLES ± .001°		GENERAL ASSEMBLY		
1 PL. DRG. 582		1-150869 BLAST UNIT		
2 PL. DRG. 415		SCALE: 1:4 REV. 15M		
3 PL. DRG. 001		DATE: 4/15/58 1474 OF 5		
		<b>406-0002</b>		



REBOUND PLENUM, CONTROL VALVE, SEPARATOR AND ELECTRICAL CONTROL PANEL  
1:8



SEAL, LINER AND IDLER WHEEL COMPONENTS  
1:8

NO.	DATE	BY	CHKD.	APP'D.	REV.
<b>REVISION</b>					
<small>THE DRAWING AND THE DESIGN, REVISIONS THEREON AND THE PROPERTY OF THE FILTER MANUFACTURER FOR ALL RIGHTS RESERVED. THIS DRAWING IS NOT TO BE REPRODUCED OR TRANSMITTED IN ANY FORM OR BY ANY MEANS WITHOUT THE WRITTEN PERMISSION OF THE MANUFACTURER.</small>					
<b>TELEBRAND</b> <small>MANUFACTURING COMPANY</small>				<small>2225 KENNEDY DRIVE          DALLAS, TEXAS 75201          U.S.A.</small>	
<small>AND/OR 6 J01</small> <small>1-21-2004-200</small> <small>3-21-2004-210</small> <small>3-21-2004-210</small>		<b>GENERAL ASSEMBLY</b> 1-180399 BLAST UNIT			
<small>DATE 4/18/03</small>		<small>DATE 4/18/03</small>		<small>1-180399</small>	
<small>REV. 5 NOTED</small>		<small>REV. 5 NOTED</small>		<b>405-0002</b>	



A B C D E F G H J K L

1

2

3

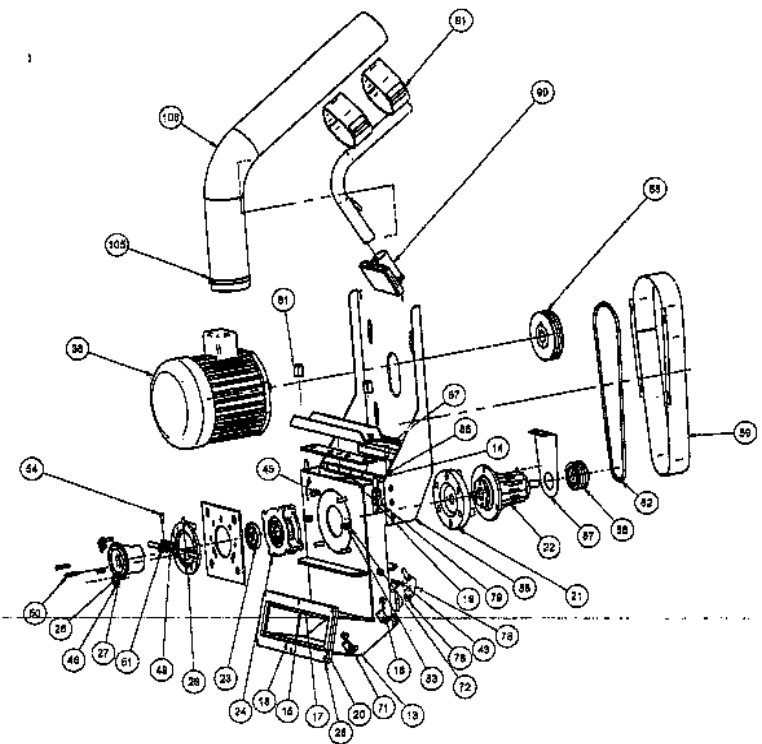
4

5

6

7

8



BLAST WHEEL, WHEEL DRIVE AND HOSE MANAGEMENT COMPONENTS

REV. 1	DATE	DESCRIPTION	SCALE	BY
<b>REVISION</b>				
<small>THIS DRAWING AND THE DATA HEREON ARE THE PROPERTY OF U.S. FILTER VIBRATOR AND ASSOCIATED COMPANIES. IT IS TO BE USED ONLY FOR THE PROJECT AND NOT TO BE REPRODUCED OR COPIED IN ANY MANNER WITHOUT WRITTEN CONSENT.</small>				
DATE	BY	APP. NO.	SCALE	REV.
1-11-68	JH	1-160899	1-160899	
<b>U.S. FILTER</b> <b>BLASTRO</b>		U.S. FILTER VALLEY CORP. OKLAHOMA CITY, OK 73103 U.S.A.		
GENERAL ASSEMBLY				
1-160899 BLAST UNIT				
ANGLE & JDP 1. K. DBO & DBO 2. P. DBO & DIO 3. P. DBO & DIO	SCALE: 1/4 DATE: 4/19/69	DRAWN: T.H. KEN CHECK: J.H. KEN	<b>405-002</b> SHEET 3 OF 5	

A B C D E F G H J K L